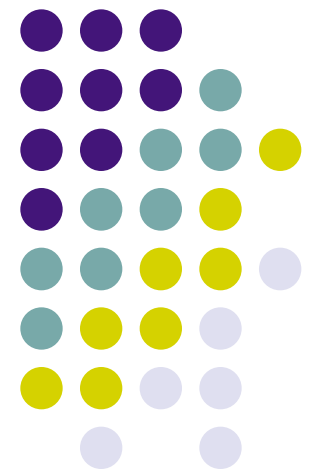


Stewardship Footprints & Ecosystem Recovery Across the Wildland/Urban Interface – Puget Sound, WA Research -

Dr. Dale Blahna, Dr. Kathleen Wolf
USDA Forest Service, Pacific NW Research Station

Emerging Issues Along the Urban-Rural Interfaces3
Atlanta :: April 2010



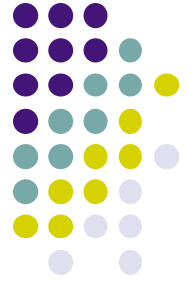


environmental stewardship

- action oriented programs or projects
- involving individuals, households, communities
- involving informal & formal institutions
- public and private resource management
- for combined purpose of improving the environment & quality of life



Social Science of Ecology Stewardship Studies



Wildland to Rural Context

- ecoregional landscape management (e.g. rangeland)
- endangered species habitat
- collaborative recreation plans
- watershed councils
- family forest extension
- non-industrial forest cooperatives



Seattle/Puget Sound Stewardship Mapping

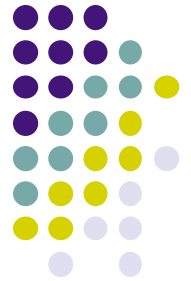


stewardship of city green



citizen science
street tree planting
habitat restoration
riparian zone repair
salmon rearing
park clean-up
“master” programs
“x-keepers” programs
“friends of” xxx

Urban Natural Resources Stewardship



The screenshot shows the USDA Forest Service Northern Research Station website. The header includes the USDA logo and the text "United States Department of Agriculture Forest Service" and "Northern Research Station". A navigation bar contains links for "Forest Service Home", "About the Forest Service", "News", "Jobs", "Maps", "Help", and "Contact Us". The main content area is titled "Stewardship Mapping" and features a sub-header "STEW-MAP: The Stewardship Mapping and Assessment Project" with a link to "Project History and Intent". The text describes a pilot assessment of urban stewardship in six cities in the Northeastern United States, conducted in 2004 by the Urban Ecology Collaborative (UEC) Research Committee. The goal was to analyze a sample of organizations and community-based urban stewardship initiatives operating in Boston, New Haven, New York, Pittsburgh, Baltimore, and Washington, D.C. STEW-MAP directly addresses the questions emerging from the pilot assessment regarding the relationship between stewardship ideologies, management types, capacities, networks, and outcomes. The text also mentions that STEW-MAP will add a social layer of information to pre-existing biophysical and urban geographic information on "green infrastructure" to understand how environmental stewardship is taking place in New York City. By capitalizing on newly emerging technologies that provide information in a non-referenced format...

USDA United States Department of Agriculture
Forest Service

Northern Research Station

Forest Service Home About the Forest Service News Jobs Maps Help Contact Us

You are here: [NRS Home](#) / [New York City Urban Field Station](#) / [Research Focus](#) / [Stewardship Mapping](#) / [Project History and Intent](#)

Stewardship Mapping

STEW-MAP: The Stewardship Mapping and Assessment Project

[Project History and Intent](#)

This project builds on a pilot assessment of urban stewardship in six-cities in the Northeastern United States that was conducted in 2004 by the Urban Ecology Collaborative (UEC) Research Committee. The goal of the assessment was to analyze a sample of organizations and community-based urban stewardship initiatives operating in Boston, New Haven, New York, Pittsburgh, Baltimore, and Washington, D.C. STEW-MAP directly addresses the questions emerging from the pilot assessment regarding the relationship between stewardship ideologies, management types, capacities, networks, and outcomes.

STEW-MAP will add a social layer of information to pre-existing biophysical and urban geographic information on "green infrastructure" to understand how environmental stewardship is taking place in New York City. By capitalizing on newly emerging technologies that provide information in a non-referenced format...

Search

Browse by Subject

- Research Programs
 - New York City Urban Field Station
- Publications & Data
- Tools & Applications
- Locations
- Scientists & Staff
- About NRS
- NRS News

Contact Information

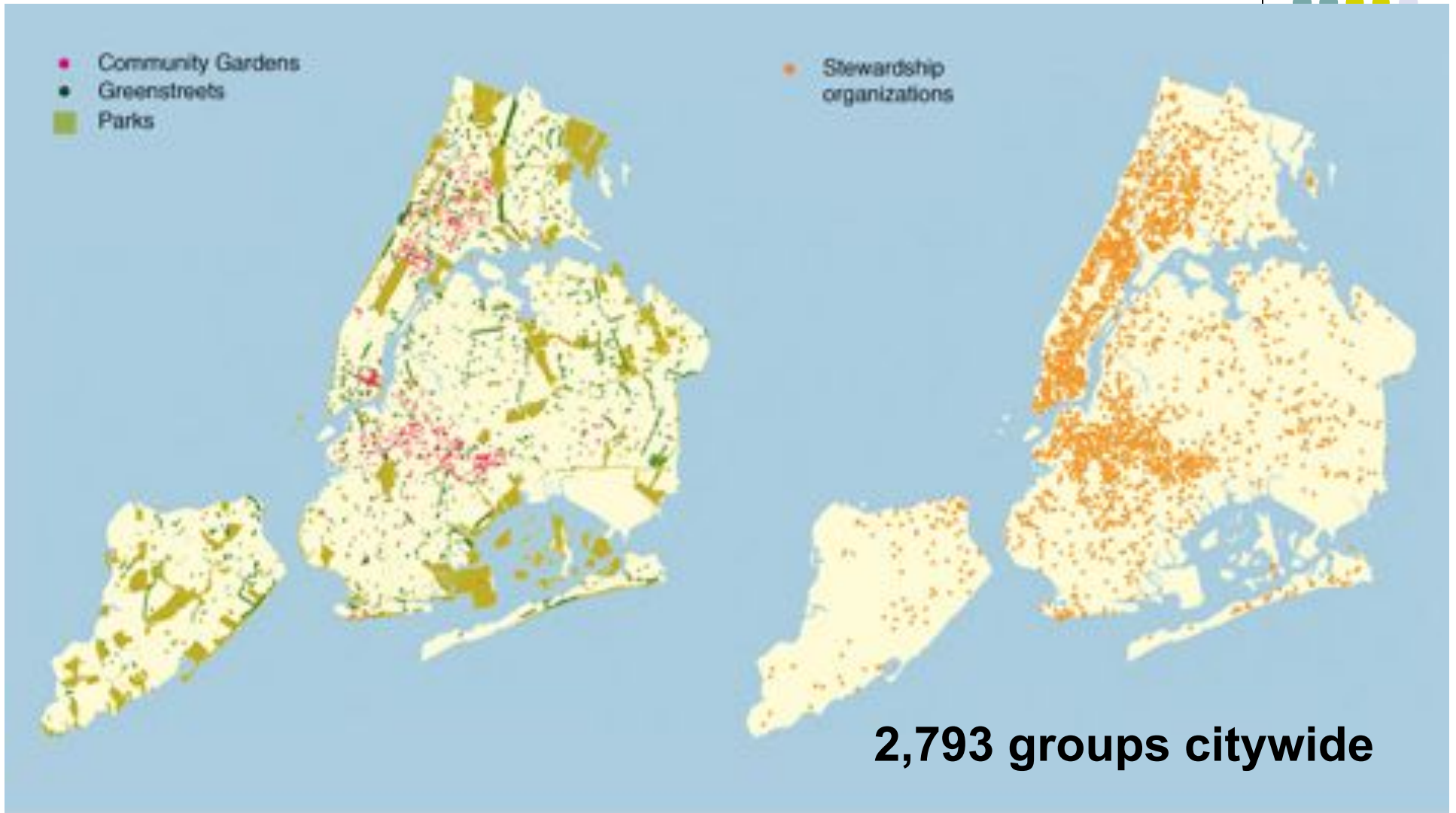
Northern Research Station
11 Campus Blvd., Suite 200
Newtown Square, PA 19073
(610) 557-4017
(610) 557-4132 TTY/TOO

Browse NYC Field Station:

- NYC Urban Field Station Home
- Research Focus
 - Stewardship Mapping
 - Urban Tree Canopy
 - Public Health, Well-being, and Urban Livability
 - Environmental Literacy
- Publications & Products
- Research Partners
- Staff
- Contact Us



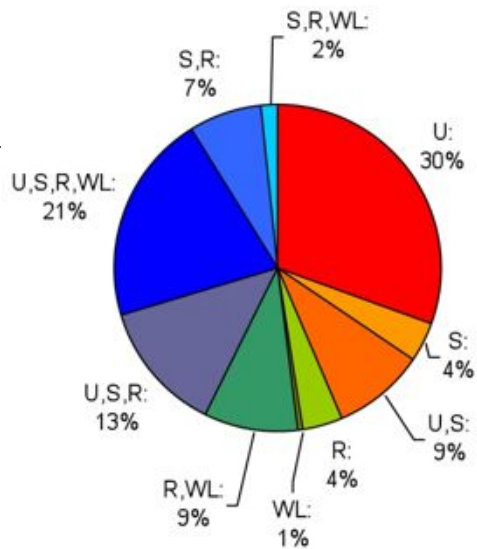
Urban Natural Resources Stewardship: NYC



How do you visualize the overlapping relationships between resources (left) and organizations plotted by STEW MAP (right)?

King/Pierce Counties Stewardship Org Census

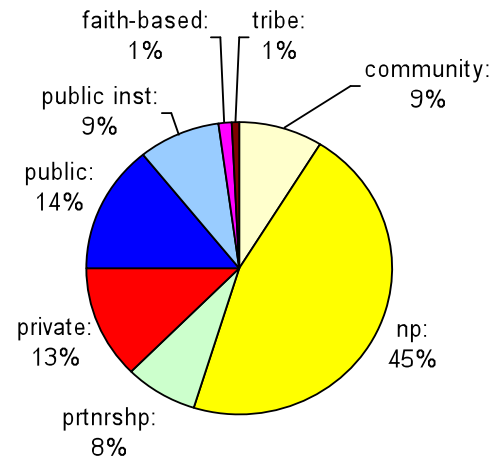
Figure 1. Landscape Gradient



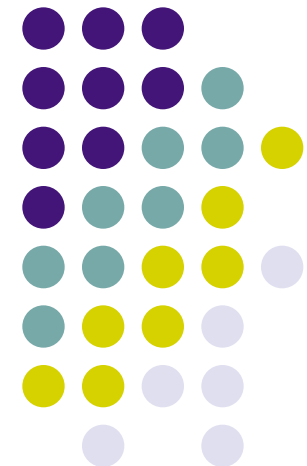
Activity Location

U-urban; S-suburban;
R-rural; W-wildland

Figure 2. Organization Type



Organization Type



The High Line :: New York City

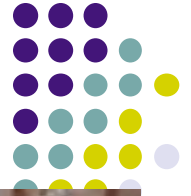


Build Community Capacity



Friends of High Line

native plant palette - bioregional



Community Resilience



**collaborative
resource
management
Elinor
Ostrom**

Urban Natural Resources Stewardship

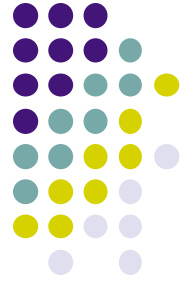
ecosystem services
improved human capital

health benefits
physical activity
improved living conditions

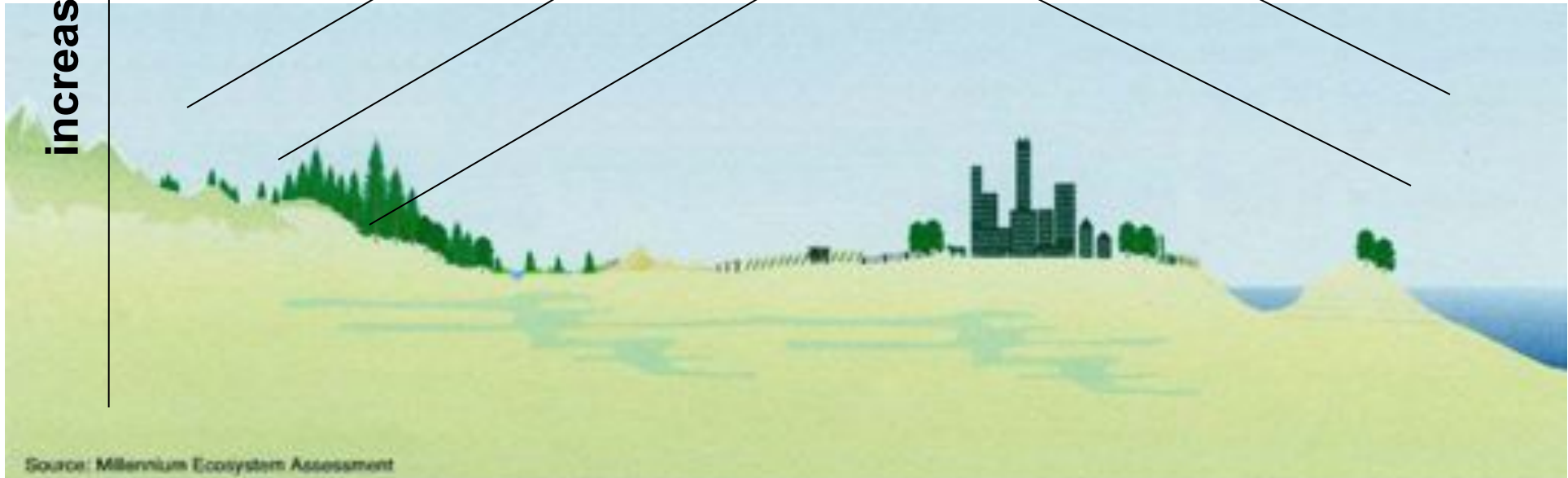
community benefits
capacity building
resilience



Psychosocial Motivations :: Stewardship



increase in value/metric



Pacific Northwest Research Station

- Pacific Northwest Research Station

- About Us

- Finances & Workforce

- History

- Laboratories

- Organization Overview

- Partners & Clients

- Contact Us

- FAQs

- Newsroom

- Publications & Products

- Research

- More Urban Research

- [Center for Urban Forest Research](#)

- [NY City Urban Field Station](#)

- [Centers for Urban and Interface Forestry](#)

- [People and Their Environments](#)

- [Northern Research Station, Urban Forests](#)

[Home](#) || [Science Framework](#) || [Research Projects](#) || [Scientists](#) || [Publications](#)



Green Cities Research Alliance Urban Natural Resources Stewardship

Partnering for sustainable cities through science, policy, and citizen action

More than 80% of the region's population lives in urbanized areas. A new research program is coming together in the Puget Sound region. The studies will focus on the social and environmental situations where people live, learn, work, and play. This knowledge will help us to create more sustainable urban areas and more livable cities.

Guiding Principles

In early 2009 US Forest Service and University of Washington scientists conducted informational interviews with about a dozen key organizations and agencies in the region. Many research needs within urbanized areas were discussed. Detailed notes were taken and reviewed, leading to a set of guiding principles that address both the process and purpose of a new research program:

Collaborators



[University of Washington](#)



[Remote Sensing & Geospatial Lab - UW](#)



[Cascade Land Conservancy](#)



[King County Parks & Recreation District](#)

<http://depts.washington.edu/gcra>